

**MARKO**  
STEAMJET PVT. LTD.

**MARKO STEAMJET PVT. LTD.**

Plot No. 25, 26/9, Phase-1,  
Nilsin Ind. Compound,  
Nr. Amco Bank, G.I.D.C., Vatva,  
Ahmedabad-382445, Gujarat, India

**REGIONAL BRANCH OFFICE**

9, SAP Plaza, Cinema Nagar,  
Near New Bus Stand,  
Salem-636009, Tamilnadu, India

**PHONE**

+91 98259 25752  
+91 79 4890 0977

**EMAIL**

info@markosteamjet.com

**WEBSITE**

www.markosteamjet.com

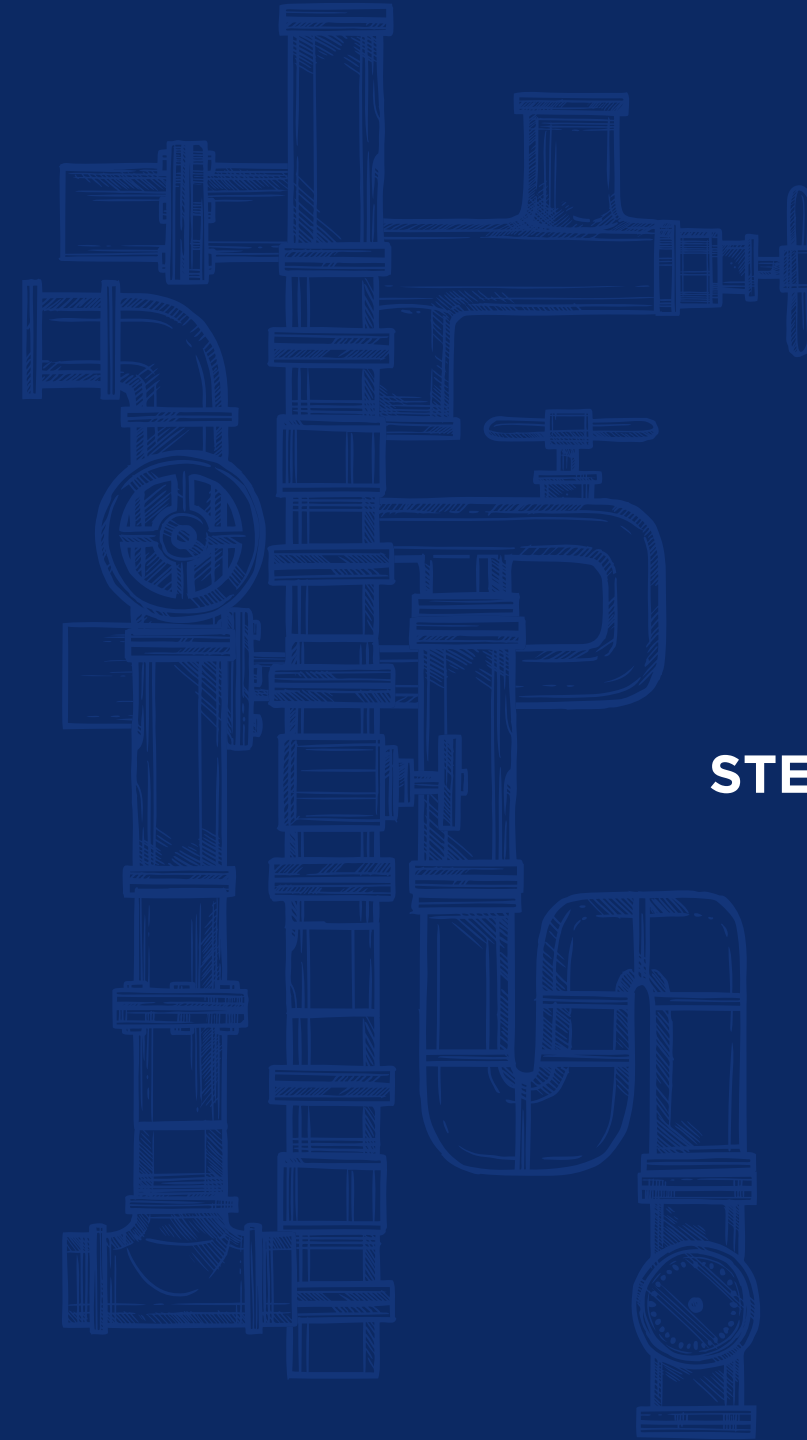


**MARKO**  
STEAMJET PVT. LTD.

Design & Manufacturing  
**STEAM AND CONDENSATE  
RECOVERY SYSTEM**

[www.markosteamjet.com](http://www.markosteamjet.com)

//gomangos.com





## ABOUT US

Marko steam jet is a leading and recognized name in the Rotary joint, valves and pumps industry, striving to manufacture quality engineered products to the related industries and boom the manufacturing numbers in India. The Prominence that the company has achieved since its establishment is its unwavering commitment to quality. With pioneering 16 years of customer trust and satisfaction, we not only create value for stakeholders, but also benefit them with our innovations and services.

At Marko Steam jet, we understand that servicing of any engineered instrument is important for better efficiency and life-span. Thus, we provide our customers with the facility of rebuilding or repairing equipments. All rebuild joints at our company are factory tested and will be delivered and installed with full confidence to strike and achieve optimum customer satisfaction.



## OUR VALUES

The values we bring to the table is amplified by the efficient services & products we guarantee our clients! The sole purpose of Marko Steamjet is to deliver outstanding, sustainable and efficient steam systems to our customers, providing exceptional service and products to our customers. Thus, building a bright and secure future for everyone involved in our business. At each stage of the organisation, Marko conveys the obligation and the authority to prevent faulty items from arriving at clients. We pay attention to this commitment and show our dedication through a thorough internal training program, continuous supplier monitoring, and compliance with all legislative, regulatory, and customer requirements.

## MISSION AND VISION

With an alert focus in manufacturing, we want to constantly strive to bring new and innovative products to the market with a vision to increase global manufacturing with engineering efficiency and business growth. Our core values are team Spirit, reliability, originality & Entrepreneurship which help us Deliver significance not only to our customers but also to our members and the society as a whole.





## OUR COMMITMENTS

## INDUSTRIES WE SERVE

We believe in providing the best of us building a bond of trust. The most valuable thing for us is to assure that our company services & products are safe and reliable for our customers.

RELIABILITY

We are determined by our consistent commitment and responsibility to the provision of consumer service excellence with a commitment of timely delivered materials.

EXCELLENCE

We work in a multifaceted industry and know that an approach based on integrity and full compliance will provide us with a sustainable environment.

INTEGRITY & COMPLIANCE

We are conscious of the ever-changing requirements of our clients and are focused on developing new products to meet the needs of the future. Thus, we embrace and accelerate the change by going the extra mile.

INNOVATION

www.markosteamjet.com

Oil



Paper

Gas



Textile

Sugar



Corrugation

Chemical



Plastic



## OUR PRODUCT

## ROTARY JOINTS & OTHER ACCESSORIES

The rotary joint is preferred for both low & high-speed application that allows the flow of different media from stationary supply pipe and in or out of rotating equipment. Heat transfer and hydraulic media normally utilized with rotary joints and rotating unions include steam, water, thermal oil, hydraulic oil, air, and coolant.

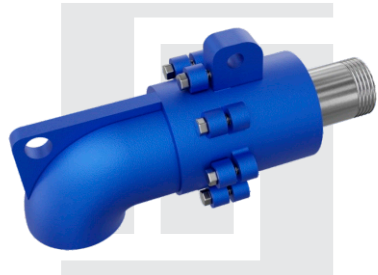
**We have two types of rotary systems, the Stationary type Rotating Joint and the Rotating type Rotary Joint.**



## STATIONARY TYPE ROTARY JOINT

The stationary type Rotary Joints are typically preferred for both high and low-speed applications because, in stationary siphons, the difference in pressure does not require speed variations, which is the case with all other Rotary Joints.

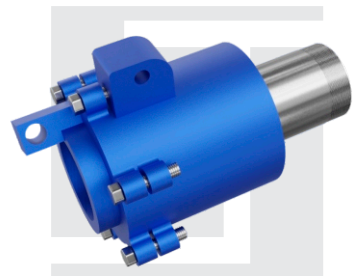
With this, Stationary Joints hold a capable and easy operating efficiency.



### SA TYPE

**SIZE** : 1/4 " to 4" BSP

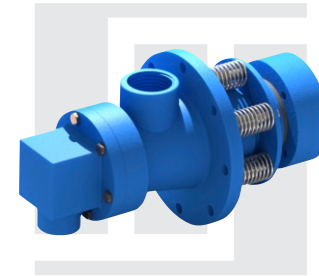
**TYPE** : MK SA (Threaded Nipple) or  
MK SAQ (Quick release nipple for water service and fluid)



### SC TYPE

**SIZE** : 3/4 " to 4" BSP

**TYPE** : MK SC (Threaded Nipple) or  
MK SCQ (Quick Release Nipple for water and fluids)



### HS-1

**SIZE:** 2" to 4" BSP

**SPEED UP TO 1500 MPM**



### BRSS

**SIZE:** 2" to 4" BSP

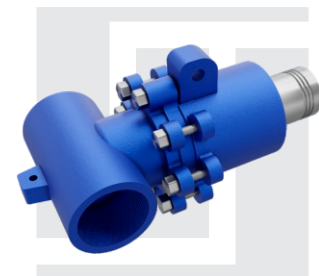
**SPEED UP TO 500 MPM**



### LS-1

**SIZE:** 1.5" TO 3" BSP

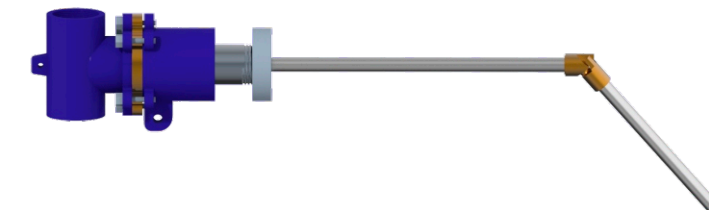
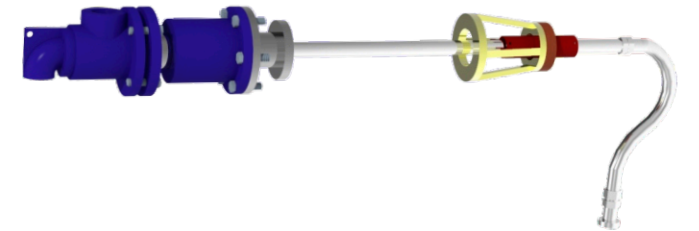
**SPEED UP TO 300 MPM**



### SBP TYPE

**SIZE:** 1/2" to 4" BSP

**SPEED UP TO 150 MPM**





## ROTATING TYPE ROTARY JOINT

Rotation type Rotary Joints has many advantages as they can be used at both, slow and moderate speeds. As the Rotation type rotary joints have rotating cylinders, they can be placed closer to the cylinder shell thereby reducing the level of condensation inside the cylinder.

Marko Steam Jet have various types of rotating syphons like LNAR rotary syphons for high-speed machines and SN rotary siphon for low speeds.



### LNAR TYPE ROTATING ROTARY JOINT (High Speed)

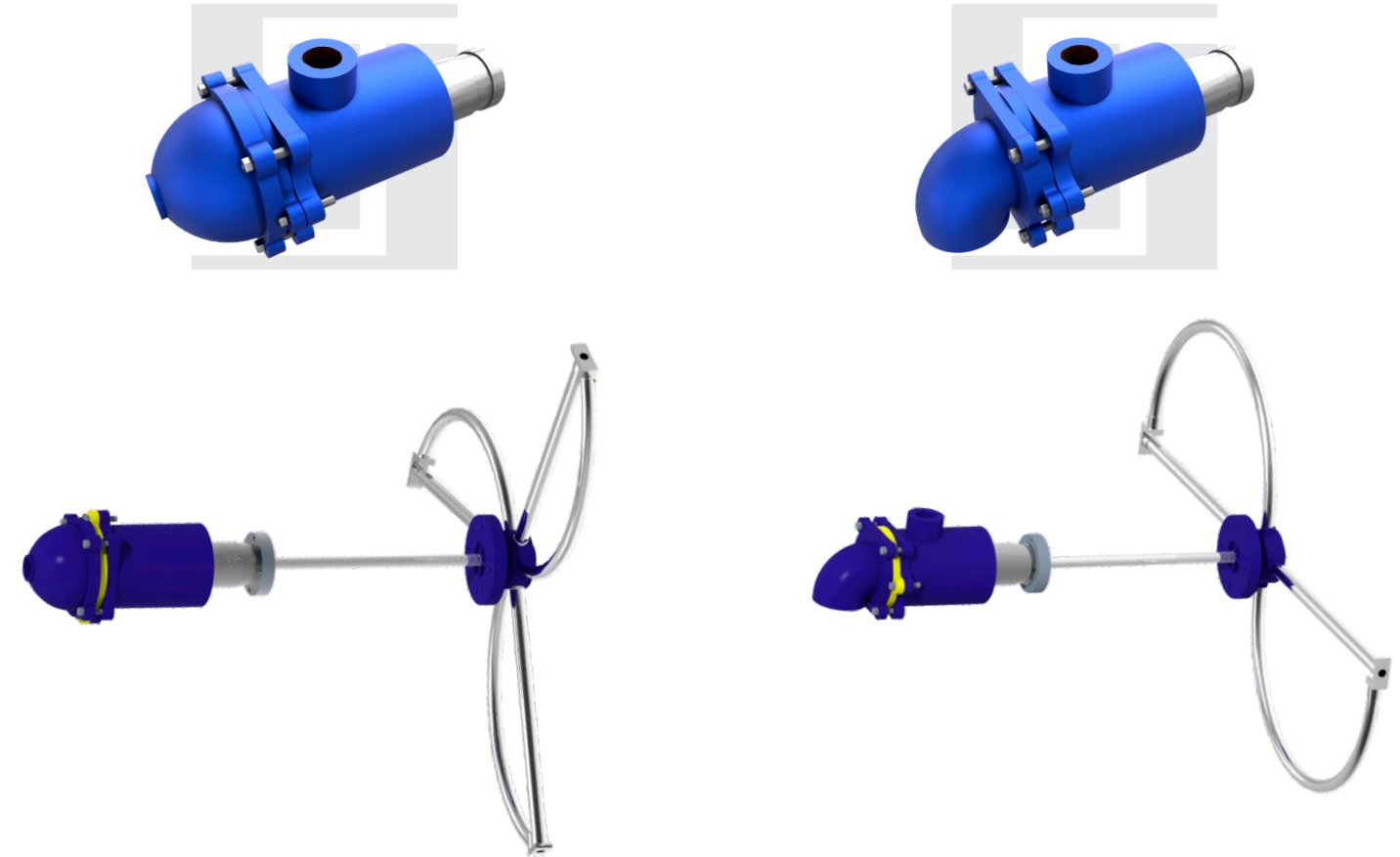
**SIZE** : ½" to 7 ½" BSP

**TYPE** : MK LNAR (Threaded Nipple) Or  
MK LNARQ (Quick Release Nipple for bucket  
scoop type MG and dryers)

### SN TYPE ROTATING ROTARY JOINT (Low Speed)

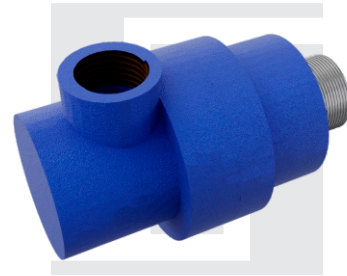
**SIZE** : ¾" to 5" BSP

**TYPE** : MK SN (Threaded Nipple) Or MK SNQ (Quick Release Nipple)





## BEARING TYPE ROTARY JOINT



**SINGLE FLOW**

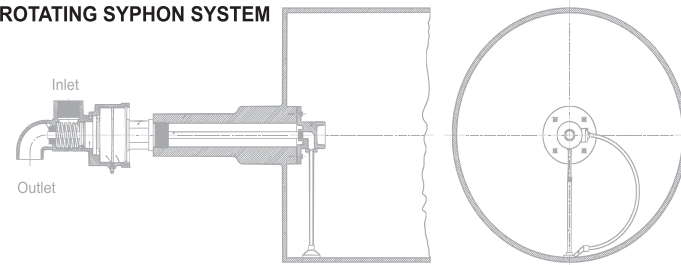
These rotary joints are single piece. They are using for Hot Oil, Cold Water or Condensate. They have four basic components housing, shaft, bearing and seals.

- SIZE** : ¼ " to 4" BSP
- MAX. PRESSURE** : UP TO 30 Kg/cm<sup>2</sup>
- MAX. TEMPERATURE**: UP TO 300°C
- MAX. SPEED** : UP TO 800 RPM

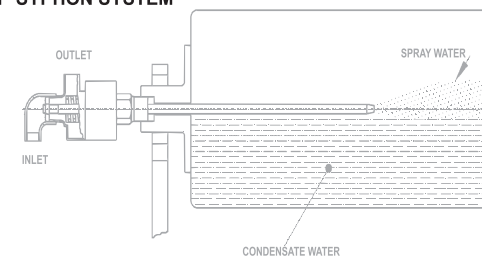


**DUAL FLOW**

**ROTATING SYPHON SYSTEM**



**STATIONARY SYPHON SYSTEM**

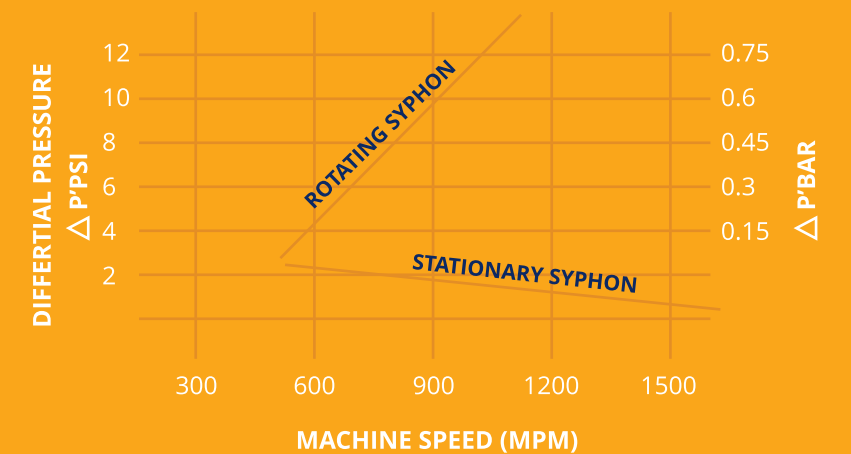


### SELECTION CHART FOR THE DIFFERENT SPEED OF CYLINDERS

SYSTEM	SPEED (MPM)			
	Up to 150 MPM	150 > 300 MPM	300 > 750 MPM	750 > 1500 MPM
Syphone Elbow type	○	□	□	□
Double Scoop Rotating Syphone	○	☆	□	□
Single Scoop Rotating Syphone	○	○	○	□
CLBT Stationary System	○	○	☆	□
Bearing Housing	○	○	○	○

○ RECOMMENDED    ☆ PERMISSIBLE    □ NOT ACCEPTABLE

### COMPARISON BETWEEN ROTARY SYPHON SYSTEM & STATIONERY SYPHON SYSTEM





## OUR PRODUCT

## STEAM & CONDENSATE RECOVERY SYSTEM

Steam systems are an important part of ensuring qualitative products and high productivity. The Steam Systems at Marko Steamjet improve steam cycle efficiency and enabling products to be qualitative and increase ease and productivity for our stakeholders. We produce a variety of products that make sure the steam reaching your gear is exactly what your process needs at each and every stage. To do the same, we have 3 distinctive products – Steam trap based system, thermo-compressor through condensate recovery system and cascading through the condensate recovery system.

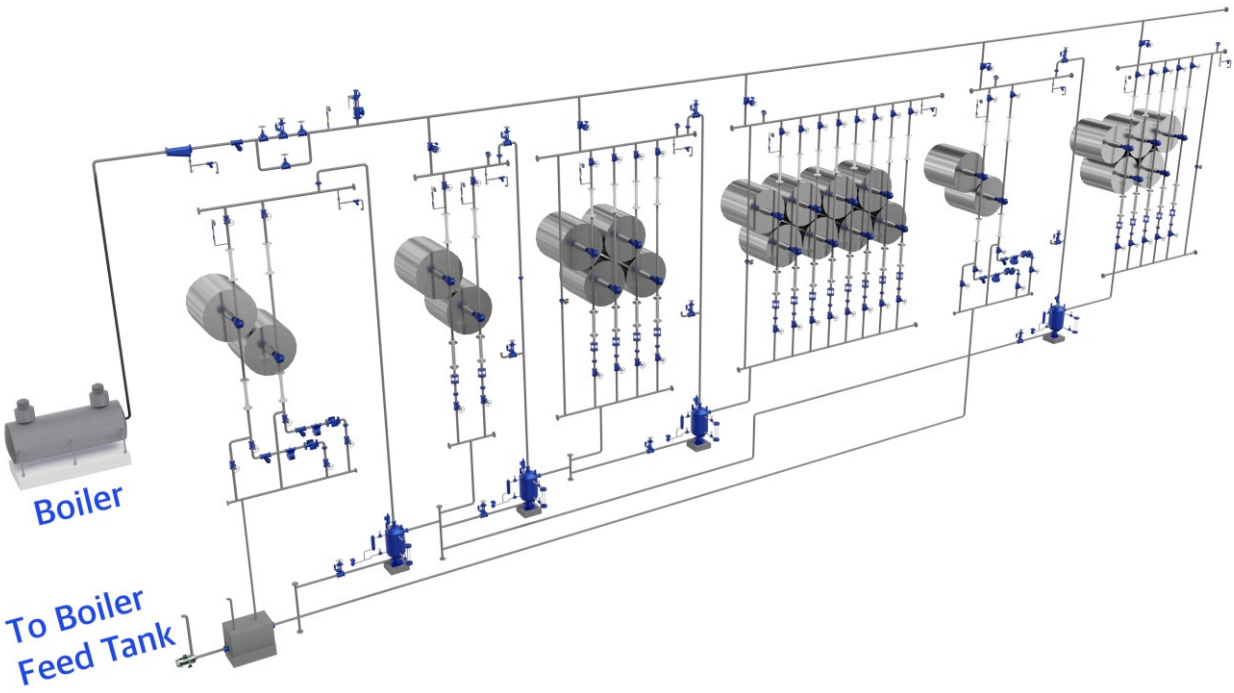






## CASCADING SYSTEM

In Cascading system we can use the flash steam from one group to the another group by maintaining  $\Delta P$  (pressure difference).  $\Delta P = P_1 - P_2$  ( $P_1$  = First live steam pressure,  $P_2$  = Second group steam pressure).  $\Delta P$  of this system must be 0.5 to 0.8 depends on the rotary joint design. If we cant get the sufficient heat transfer in second group. We can add more steam with the use of control valve by maintaining the  $\Delta P$ . In Cascading system the high pressure steam isn't necessary for vacuum the flash steam. In this system, We have to make more groups to get the maximum benefit of the flash steam.

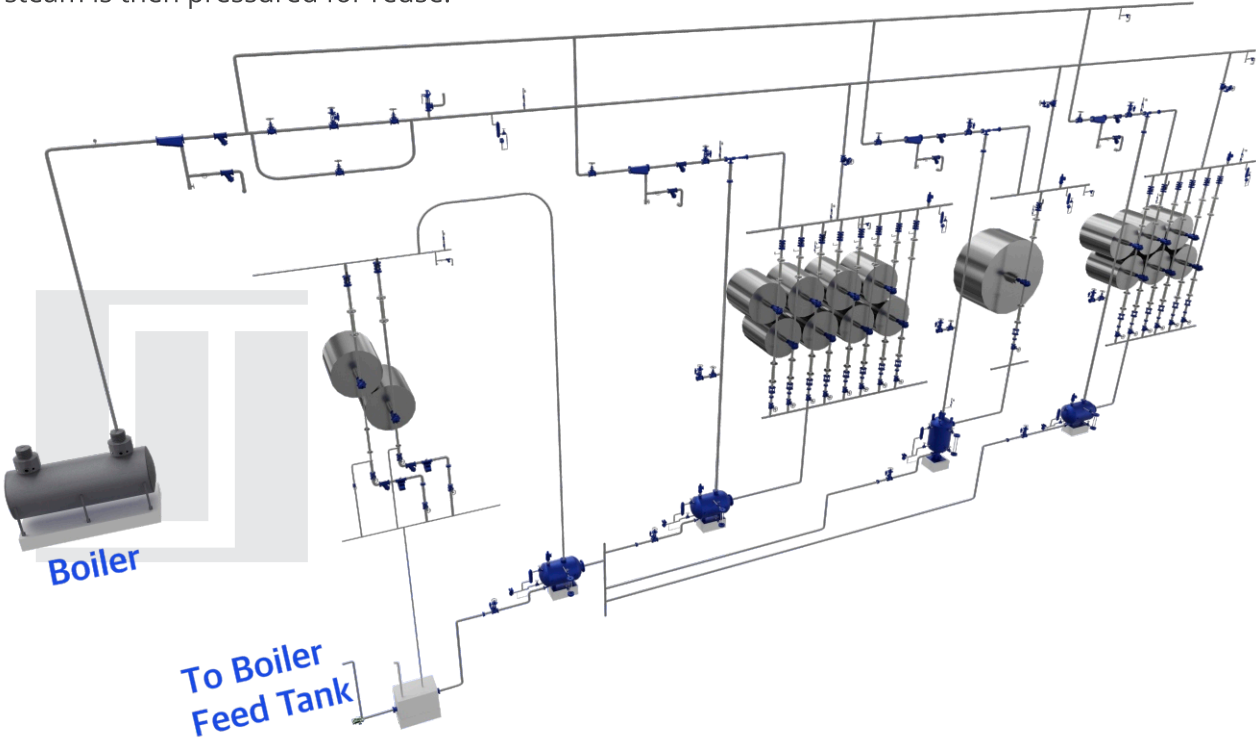


## THERMO-COMPRESSOR

The thermo-compressor recovers the low-pressure steam that is leftover from various processes and pressurizes it with mixing high-pressure motive steam in order for it to be reused. Upon mixing high and low-pressure steam, the valve reducing pressure responds to the fluctuations adjusting it to properly regulate the steam flow.

### FEATURES

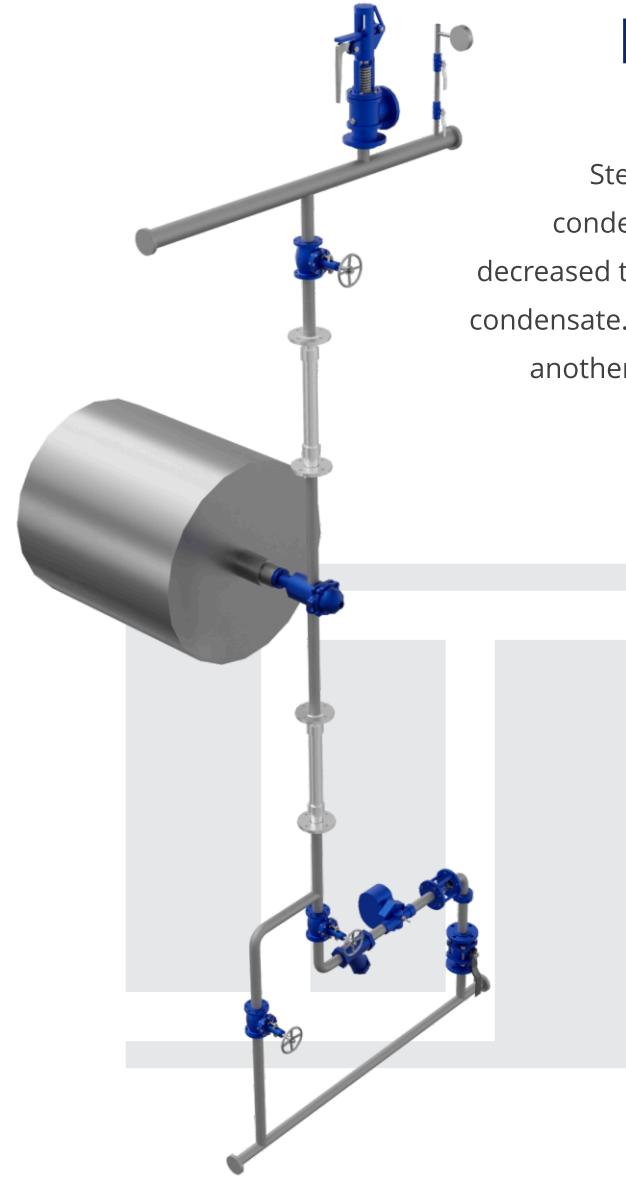
- Reuse energy from excess steam by increasing it to a usable pressure
- Utilizes a proprietary high-efficiency steam compressor.
- Condensate is first reduced to atmospheric pressure in the tank causing it to flash into steam. The steam is then pressured for reuse.





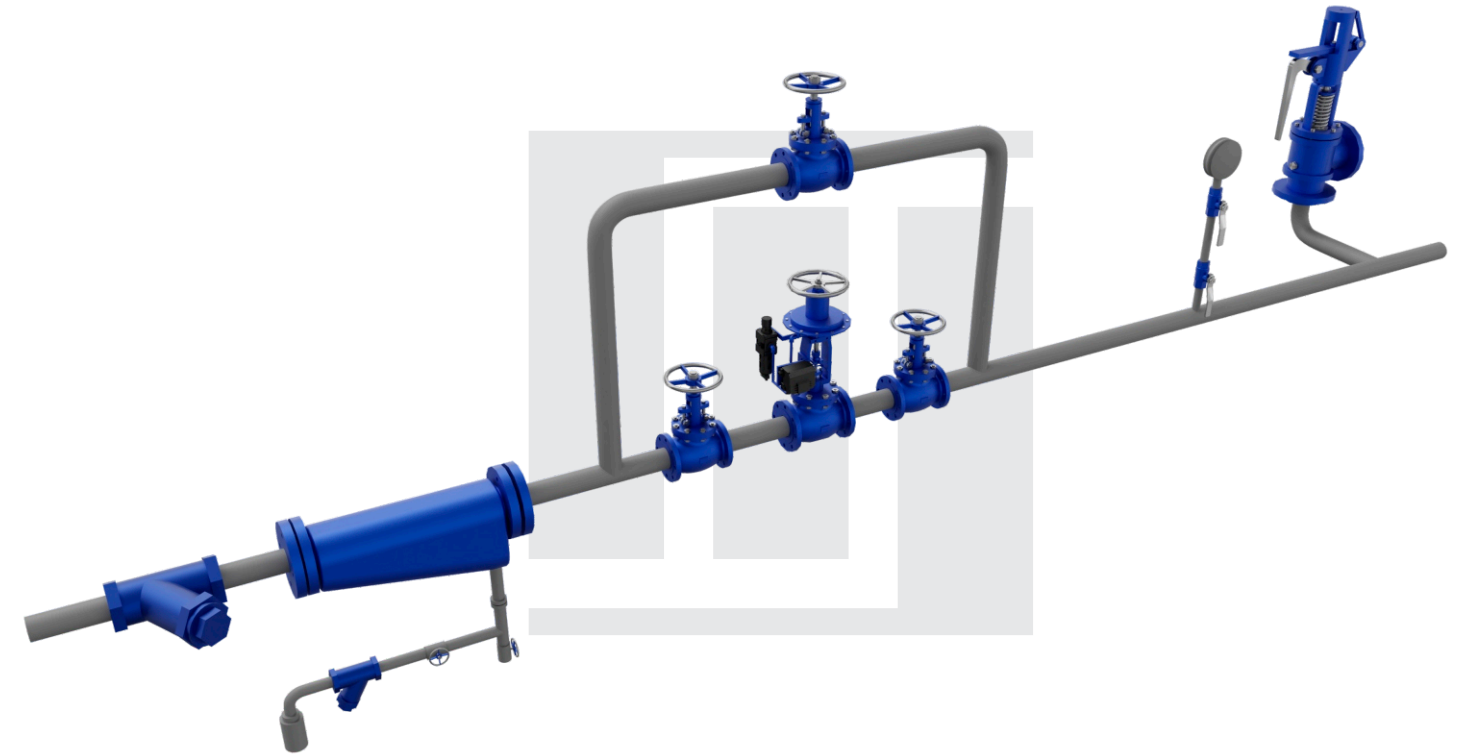
## STEAM TRAP BASED SYSTEM

Steam Trap is a conventional and low cost condensate remaining system. Steam Trap is decreased the pressure as well temperature of the condensate. So that we can't use the flash steam in another cylinder because of less heat transfer.



## PRS STATION

This is a pressure reducing control system with high-quality components which ensure reliability and ease of system work.





## OUR PRODUCT

## DIFFERENT TYPES OF VALVES & ACCESSORIES

Marko Steamjet is a global supplier of world-class valves and accessories that define quality and are used in engineering systems throughout the country and globally. At Marko Steamjet, we supply a variety of valve and accessory making industry processes easier and premium.





## VALVES



### GLOBE VALVE

Globe valves are used in throttling, pressure-equalizing operations and frequent operative application.

**SIZE** : ½" to 24"

**ENDS** : Screw end/Flange end

**MATERIAL** : C.I., W.C.B., GUNMETAL, S.S. as per requirement



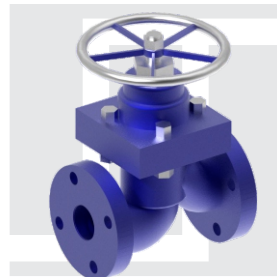
### GATE VALVE

Gate valves are used to start, stop and restrict flow as per requirements. Generally, the valves are fully open or closed and this is done when the disk inside is either pulled up or removed, adjusting the space in the pipe system in which the valve is installed.

**SIZE** : 8 mm to 100 mm

**ENDS** : Screw end/Flange end

**MATERIAL** : C.I., W.C.B., GUNMETAL, S.S. as per requirement



### PISTON VALVE

**SIZE** : 15 mm to 150 mm

**ENDS** : Screw end/Flange end

**MATERIAL** : C.I., W.C.B., GUNMETAL, S.S. as per requirement

### CONTROL VALVE

Control valves are used in various applications like steam, liquids and gases. Being modularly designed and versatile, the Control Valves at Marko Steam Jet is hassle-free with zero to minimal maintenance. We have 3 types of Control valves.

**SIZE** : 25 mm to 300 mm

**MATERIAL** : C.I., W.C.B.,  
S.S. as per requirement



**PNEUMATIC OPERATED  
ROBOTIC CONTROL VALVE**



**ELECTRO-PNEUMATIC  
CONTROL VALVE**

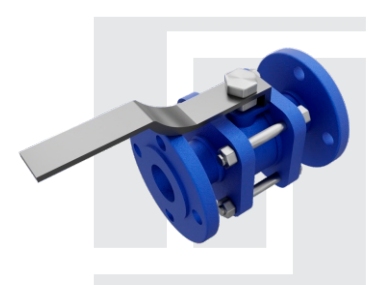
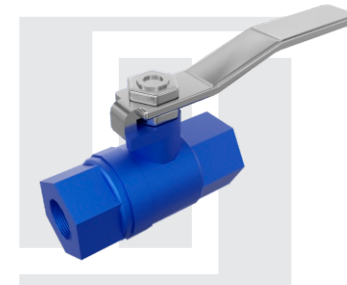
### CONDENSATE VALVE

**DESIGN** : 1PC / 2PC / 3PC

**SIZE** : 15 mm to 100 mm

**ENDS** : Screw end/Flange end

**MATERIAL** : C.I., W.C.B., GUNMETAL,  
S.S. as per requirement





## ACCESSORIES



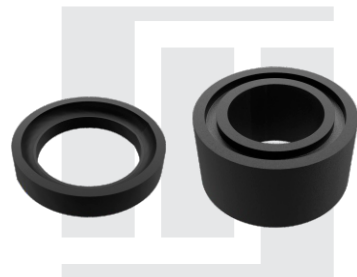
### SYPHON ELBOW

There two types of syphon elbows:

1. Simple Syphon Elbow
2. Spring Loaded Syphon Elbow

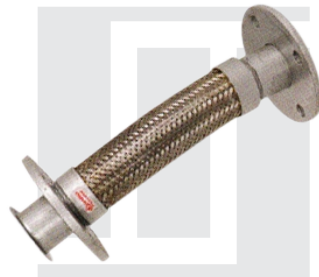
**SIZE** : ¼" to 1"

**MATERIAL** : GM and SS solid bar with SS seat, hinge and cap



### RINGS AND GUIDES

The Rings and Guides at Marko Steam Jet are all manufactured from imported material like MK -SGC and MK - IC. We provide carbon graphite rings and carbon filled Teflon rings for Marko Steam Jet Rotary Pressure Joint and also customize as per your drawing.



### HOSE PIPES

**SIZE:** 1/2" to 6"

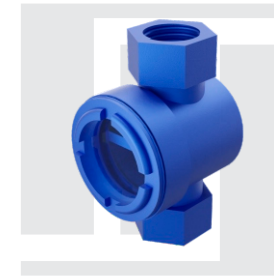
- At Marko Steam Jet, we manufacture two kinds of hose pipes, the SS type and the EPDM type.
- S.S-321, S.S - 304, OR S.S-316 below with S.S-304 Braided Pipes, S.S-304 Stud End with S.S heavy metal knuckering and Double Lining Welded Pipe for long life.
- The pipes are polymer-based to enhance flexibility.

### VIEW GLASS

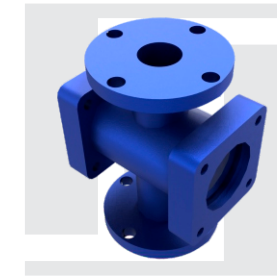
**SIZE** : ½" to 2"

**ENDS** : Threaded / Flange End

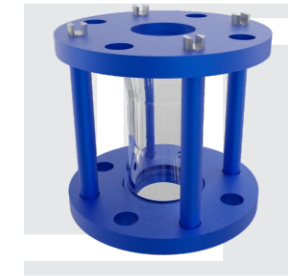
**MATERIAL** : WCB / S.S. / Gunmetal with toughened glass threaded or flange end



Single window

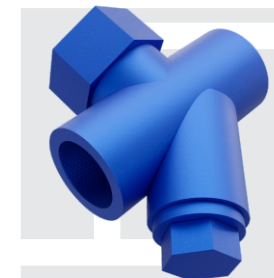


Double window



Tube glass

### TD-3

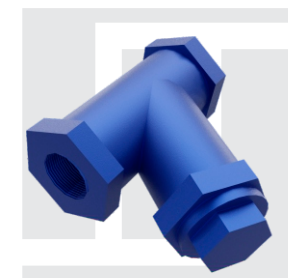


**SIZE** : 15 mm to 25 mm

**ENDS** : Screwed / Socket Weld

**MATERIAL** : Highly Investment Casting or Gunmetal

### Y TYPE STRAINER



**SIZE** : 15 mm to 80 mm

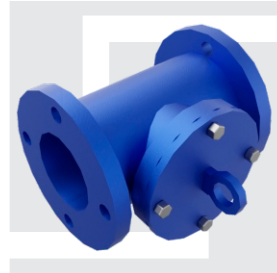
**ENDS** : Screwed / Flange End

**MATERIAL** : WCB / S.S. / Gunmetal / Highly Investment Casting

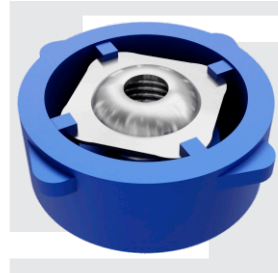




## ACCESSORIES



**NRV**



**DCV**

**SIZE** : 15 mm to 25 mm  
**ENDS** : Screwed / Flange End  
**MATERIAL** : WCB / S.S. /  
Highly Investment Casting



### SAFETY VALVE

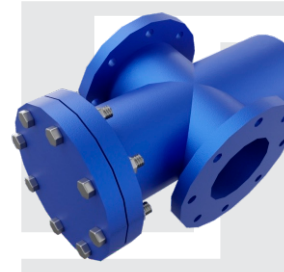
**SIZE** : 25 mm to 300 mm  
**ENDS** : Flange End - 150/300 Class, F or H Table  
**MATERIAL** : WCB Casting- IBR/Non-IBR



### STEAM TRAP

**SIZE** : 15 NB to 50 NB  
**ENDS** : Flange End/Screwed End  
**MATERIAL** : CI/WCB Casting- IBR/Non-IBR

## MOISTURE SEPARATOR



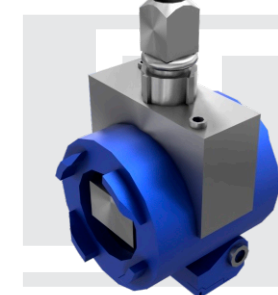
**T Type**



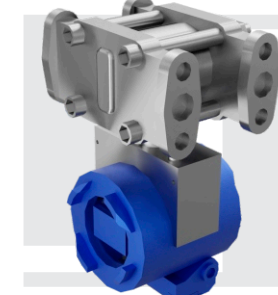
**Y Type**

**SIZE** : 25 mm to 300 mm  
**ENDS** : Flange End - 150/300 Class, F or H Table  
**MATERIAL** : WCB Casting- IBR/Non-IBR

## TRANSMITTER

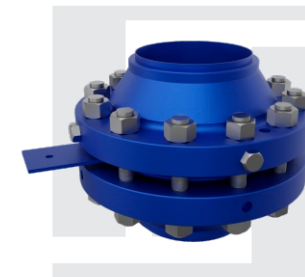


**Pressure Transmitter**



**Differential  
Pressure Transmitter**

## FLOW METER



**Orifice Type**



**Electromagnetic Type**



## OUR PRODUCT

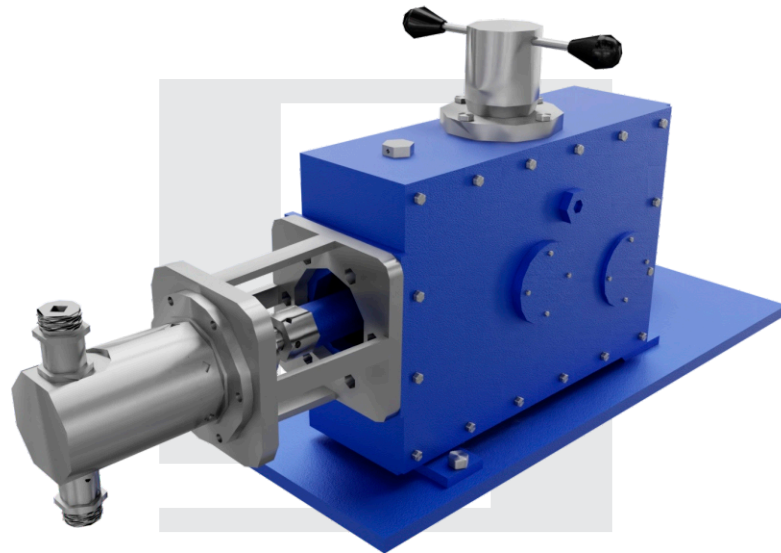
## DOSING METERING PUMPS

We design and manufacture a sturdy and affordable gamut of liquid metering solutions like dosing pumps, metering pumps, mechanical dosing pumps, electronic dosing pumps, skid-mounted dosing pumps etc that are extensively used in diverse industries. Marko metering/dosing pumps are reciprocating positive displacement pumps for fluids, with a continuous adjustment of metered flow. Made available at industry leading prices, our comprehensive assortment is qualitative in nature and is widely acclaimed by our global clientele.





## DIAPHRAM TYPE AND PISTON PLUNGER TYPE METERING DOSING PUMP



### PRINCIPLE

Marko metering / dosing pumps are reciprocating positive displacement pumps for fluids, with a Continuous adjustment of metered flow. In one compact machine, the metering pump combines the Functions.

1. Conveying
2. Measurement
3. Adjustment

### MATERIAL OF CONSTRUCTION-(CONTACT PARTS)

- S.S.316/S.S.304/Hastelly - B - or C/ Alloy-20/
- Polypropylene/Uhmwpe/Pyc/Ptfe/20%G.F.T.  
(Plunger or as per customer's requirement.)

### OPERATING RANGE

There are Various models which can metered 2 Lph To 15000 Lph Against Maximum Discharge Pressure of 1000kg/cm<sup>2</sup> At low or high temperature.

### FEATURES

- Digital Stroke length adjustments to achieve very high accuracy.
- All rotating components are hardened and ground.
- Our Pumps are capable to dose the fluid within Accuracy +/- 1% and Turn Down Ration 10:1
- Easily compatible with most of the fluids.

